

Child Protection and Safeguarding Policy 2024

Contents

Section	Page
1.0 Policy statement	3
2.0 Scope and purpose	4
3.0 Procedures and training	5
4.0 Trust commitment	6
5.0 Roles and responsibilities	6
6.0 Prevention through education	8
7.0 Respond and report procedures	9
8.0 Looked after children	9
9.0 Children who are at greater risk of harm and children with increased potential need for Early Help	9
10.0 Contextual safeguarding	11
11.0 Child on Child abuse	11
12.0 Prevent duty	11
13.0 Online safety	12
14.0 Record keeping	12
15.0 Allegations, concerns and whistleblowing	12
Appendix 1 - Academy specific details	13
Appendix 2 - Respond and report flowchart	14



1.0 Policy statement

The Dixons Academies Trust takes seriously its 'duty to safeguard and promote the welfare of students at the school' (Children Act 1989 and Education Act 2004). The welfare of the child is paramount and we adhere to all aspects of Keeping Children Safe in Education (September 2024) and Working Together to Safeguard Children (2023). Nothing is more important than children's welfare and we will always work in the best interests of the child. All children must have equal rights to protection. We fully understand and accept that child protection and safeguarding is everyone's responsibility and that involves preventing impairment to children's physical and mental health. We are committed to having in place procedures that will support informed and sensitive management of safeguarding and child protection issues. Our trust recognises that there are several inter-linking components which form an integrated framework to provide a protective / preventative service. These include:

- known operational policies and procedures for dealing with child protection issues
- having in place clear structures to support the child protection function (i.e. designated lead, named safeguarding advocate on the Local Academy Board (LAB) and a clear policy)
- having a Safer Recruitment policy and procedures (see policies)
- ensuring that staff understand the expected code of conduct for working with children (see Professional Conduct policy)
- having in place clear structures to continue to safeguard students who are on roll at a Dixons academy, but based at an alternative provision, on a managed move to another school, have a part-time timetable, or where there is a persistent attendance issues
- are empowered and aware of issues related to their own welfare (particularly through the Personal Development Studies / PSHCE programme and assemblies)

Our trust recognises the importance of being vigilant at all times both with regards to those we know and also those we do not, and in never believing that 'it could never happen here' (see Bichard Report 2004). In relation to this, we recognise that it is possible for staff (including supply staff, volunteers and contractors) to behave in a way that causes harm to children. We take any allegation seriously and follow local arrangements for dealing with this (see policy on dealing with allegations). All staff understand that any concerns must be reported immediately to the Designated Safeguarding Lead (DSL).

This policy has been developed in accordance with the principles established by:

- Children Acts (1989) and (2004)
- Education Act (2002), and in line with government publications
- Revised Safeguarding Statutory Guidance 2 'Framework for the Assessment of Children in Need and their Families' (2000)
- What to do if you are worried a Child is Being Abused – Advice for Practitioners (2015)
- Disqualification under the Childcare Act (2006)
- Equality Act (2010)
- Counter-Terrorism and Security Act (2015)
- Children and Social Work Act (2017)
- Working Together to Safeguard Children (2023)
- Data Protection Act (2018)
- Data Protection in Schools (2024)
- Positive Environments Where Children Can Flourish – Ofsted (2018)
- Teaching On-line Safety in Schools (June 2019)
- Meeting digital and technology standards in schools and colleges (2023)
- [Keeping Children Safe in Education \(2024\)](#)

Safeguarding students is a core function of our trust and a whole-school approach is maintained in all our academies. As such, this policy relates to many other policies (<https://www.dixonsat.com/about/policies>) and in particular the following:

- Anti-Bullying
- Behaviour
- Care and Control of Students
- Child Goes Missing or Absconds
- Child Missing in Education
- Dealing with Allegations of Abuse Against Staff
- Educational Visits

- Health and Safety
- Looked After Children (Designated Person)
- Online Safety and Acceptable Use of Information Technology
- Professional Conduct
- Relationships and Health Education (Primary)
- Relationship and Sex Education
- Safeguarding Supervision
- Safer Recruitment Selection
- Whistleblowing

Through all of the above, we operate a ‘board to floor’ approach to safeguarding and child protection whereby all staff (including supply staff, volunteers and contractors) are made aware and take seriously their responsibilities so that every precaution can be taken to minimise risk of harm to our students whilst they are in our academies, when being educated off-site, and in their lives outside of education.

This policy will be reviewed in light of any legislative or guidance changes, at least annually and through consultation with the Designated Safeguarding Lead cross-cutting team, principals and the executive leadership of our trust.

2.0 Scope and purpose

- 2.1 To ensure that all staff understand their role as part of a wider safeguarding system for children.
- 2.2 To ensure all staff understand that safeguarding and promoting the welfare of children is everyone’s responsibility and, in order to fulfil this responsibility effectively, all practitioners should consider at all times what is in the best interests of the child. Staff must never assume that a colleague or other professional will take the action needed, and must share information that might be critical in keeping children safe.
- 2.3 To ensure that all staff know that no single practitioner can have a full picture of a child’s needs and circumstances and to understand the importance of taking concerns and disclosures seriously, taking prompt action, and sharing information appropriately.
- 2.4 To ensure that children with protected characteristics are not unlawfully discriminated against and that proportionate action is taken to address the disadvantages they face, in general and in safeguarding in particular.
- 2.5 To ensure that children continue to be safeguarded when being educated off-site for any reason, including non-attendance and remote learning arrangements.
- 2.6 To enable all staff to understand the ‘duty of care’ placed on them and their role in safeguarding and promoting the welfare of all students.
- 2.7 To ensure that all staff understand the procedures in place when dealing with potential child protection issues.
- 2.8 To demonstrate our trust’s commitment and procedures with regards to child protection.
- 2.9 To contribute to the wider safeguarding portfolio of policies (see below).
- 2.10 Safeguarding and promoting the welfare of children is defined for the purposes of the guidance and this policy as:
- providing help and support to meet the needs of children as soon as problems emerge
 - protecting children from maltreatment, whether that is within or outside the home, including online
 - preventing the impairment of children’s mental and physical health or development
 - ensuring that children grow up in circumstances consistent with the provision of safe and effective care
 - taking action to enable all children to have the best outcomes
- 2.11 For the purpose of this policy, the term ‘parent’ is used to describe those with parental.
- 2.12 Children includes everyone under the age of 18.
- 2.13 At our sixth form provisions, there are students on roll who have had their 18th birthday and therefore do not fall under the definition of ‘child’ or within the scope of Keeping Children Safe in Education and related guidance and policies, but continue to be subject to our duty of care and general responsibility to safeguard all of our students. When supporting young people over the age of education we will:
- provide bespoke response, signposting and support
 - promote and amplify the young person’s voice and wishes
 - ensure we maintain the young person’s rights in relation to data and information sharing
 - work with colleagues within our trust e.g. academy safeguarding team and trust central team resources, to make informed shared decisions about how best to support each young person
 - contact the police if we feel that the young person is at risk of serious harm
 - continue to use CPOMS to log concerns and analyse patterns and themes within academies and trust-wide

3.0 Procedures and training

In order to minimise risk to students, the main elements to our safeguarding practice are as follows:

- 3.1 We practice safer recruitment in checking the suitability of staff and volunteers in every academy to work with children (see Safer Recruitment Selection policy).
- 3.2 We continually review all practices in order to establish a safe environment in which children can learn and develop (see Health and Safety policy).
- 3.3 We raise awareness of child protection issues with students and aim to equip them with the skills needed to keep them safe.
- 3.4 We ensure staff are aware of how to conduct themselves with students and give regular training on child protection and safeguarding. All staff in school have read Part 1 (or, if they do not work directly with children, Annex A) of Keeping Children Safe in Education (Sept 2024) and re-read it on an annual basis to ensure a common understanding that safeguarding and promoting the welfare of children is everyone's responsibility. Everyone who comes into contact with children and their families has a role to play in safeguarding children.
- 3.5 Regular updates are provided to staff via emails, bulletins and staff meetings. We adhere to the recommendation that formal training is delivered at least annually and regular updates keep safeguarding at the forefront of everyone's thinking and practice.
- 3.6 All staff are informed of the students with social workers and they understand that they have a particular responsibility for removing barriers to learning for this disadvantaged group.
- 3.7 All staff receive specific training about online safety, particularly in relation to the remote education of students and use of technology to support teaching and learning.
- 3.8 The early help ethos ensures that we provide support for our students as soon as a problem is identified. This applies to all students from early years to those in their teens. Staff discuss early help requirements with the DSL and support other agencies undertaking an early help assessment.
- 3.9 We recognise that some children are more vulnerable than others and therefore may be more at risk from abuse (see section 8 below).
- 3.10 We carry out appropriate risk assessments in all academies for all school activities (e.g. educational visits) and also for individual children as necessary.
- 3.11 We have procedures in place to continue to safeguard students who, for a period of time, are educated at alternative provision, are on a managed move to another school, on part-time timetables, have persistent attendance issues, or who are being educated remotely.
- 3.12 We raise awareness with all students of the risks of technologies through teaching about e-safety all our schools are 'mobile phone' free as we recognise the risks posed to children from mobile technology, including excessive use.
- 3.13 We use filtering and monitoring software to ensure appropriate use and so that concerns can be responded to, and all staff receive information on how this works and how it can support their practice
- 3.14 We encourage a positive atmosphere of openness and support where students are encouraged to have the confidence to talk to familiar adults with the understanding that they will be listened to. Enough time is dedicated to the pastoral curriculum to allow for teaching of all aspects of safeguarding.
- 3.15 We operate a 'zero-tolerance' approach to child on child abuse, including bullying, cyberbullying and prejudiced-based and discriminatory bullying (see section 10 below and Behaviour and Anti-Bullying policies).
- 3.16 We have a strong emphasis on student voice through the student council, faculty reviews, policy reviews and the employment of key staff.
- 3.17 We have procedures for identifying and reporting cases or suspected cases of abuse and are ever vigilant to all concerns regarding any unhealthy opinions or behaviours a child may display.
- 3.18 We support students who have been abused in accordance with their agreed child protection plan and offer non-prejudicial support for those who make allegations.
- 3.19 We ensure all staff have training in child protection procedures at induction. These procedures follow the guidelines set out by OFSTED, Circular 10 / 95, Safeguarding Children in Education 2004 and Keeping Children Safe in Education (2024). Staff will be updated annually to ensure everyone is trained in how to respond appropriately and sensitively to child protection concerns. Staff training is tailored to the role of the individual.
- 3.20 We are committed to working with other agencies in order to safeguard children and setting up an interagency assessment as appropriate under the Early Help system (see Working Together to Keep Children Safe 2023).
- 3.21 In all academies, we will consider the child's wishes or feelings when determining what action to take and what services to provide to ensure every child is safe and staff do not promise confidentiality at any point. We recognise that children may not feel ready, or not know how to disclose abuse, and this is something we seek to minimise through education and strong relationships. All staff are trained to ensure that students are reassured that they are being taken seriously, and that they are never made to feel ashamed or that they are creating a problem by sharing information about their wellbeing and safety.
- 3.22 Each academy will have an identified Designated Safeguarding Lead (DSL), who is a member of the Senior Leadership Team, appropriately trained, and who has capacity to perform all aspects of the role fully.
- 3.23 The DSL and any Deputy Designated Safeguarding Leads (Deputy DSL) undertake formal re-designation training at least every 2 years with a recognised trainer.



3.24 Our trust commissions an external safeguarding review on a biennial basis

3.25 This policy applies to the whole trust community and all academies.

4.0 Trust commitment

We recognise that, for students, high self-esteem, confidence, supportive friends and clear lines of communication with a trusted adult promotes prevention.

Academies in our trust will therefore:

- 4.1 Establish and maintain an ethos where students feel secure, are encouraged to talk and are listened to.
- 4.2 Ensure that students know there are adults in the academy who they can approach if they are worried or in difficulty.
- 4.3 Include in the curriculum activities and opportunities for personal and social development which will equip students with the skills they need to recognise and be safe from abuse (See RHE and RSE policies and consult individual academy websites for further information on their PSHE or equivalent curriculum). Students need to recognise behaviours which are unacceptable from peers and adults.
- 4.4 Ensure that wherever possible every effort will be made to establish effective working relationships with parents whilst always putting the needs of the child first.
- 4.5 Ensure that our approach to managing behaviour is positive and that staff understand how to behave when working with children.
- 4.6 Recognise its obligation to work with and co-operate with colleagues from other agencies (Education Act 2004 and Working Together 2023).
- 4.7 Ensure all staff are aware of the school guidance for their use of mobile technology and have discussed issues around the use of mobile technologies and their associated risks.
- 4.8 Ensure that appropriate and effective filtering and monitoring software, currently Sophos (firewall) and Senso (monitoring), is in place across all academies, and staff are able to use it effectively.
- 4.9 Ensure that staff are fully aware of the different types of child abuse and signs of abuse (see appendix).
- 4.10 Recognise that staff build up expertise in dealing with concerns and safeguarding issues over time. Therefore, the trust will provide opportunities for staff to contribute to shaping the safeguarding arrangements and child protection policies.
- 4.11 To have the same high expectations for safeguarding of alternative provision and any other partner organisation being used by any of our academies, and for action to be taken to ensure this prior to use as well as on an ongoing basis

5.0 Roles and responsibilities

- 5.1 Each academy in the Trust has a 'Designated Safeguarding Lead' (DSL) who is a senior member of staff and has the responsibilities set out in Annex C of Keeping Children Safe in Education (2024). Each academy also has a named advocate for child protection, on their Local Academy Board (LAB), who is also trained on a regular basis and who has the responsibility to ensure that the academy has an effective policy and structures in place to support the safeguarding of children. Our trust has a specific job description for both the DSL and named advocate which is available on request.
- 5.2 All staff need to be aware of the signs of child abuse, neglect and exploitation; staff must inform the DSL in total confidence, and a sensitive, tactful and totally confidential investigation will then take place. If the signs are confirmed, one of the academy's trained safeguarding team will manage any potential Child Protection issue. All staff understand that child protection information is 'need to know' and confidential information about a child should not be freely shared and that neither the Data Protection Act (2018) nor UK GDPR prevent the sharing of information for the purposes of safeguarding children. The child's interests come first and their dignity must be protected.
- 5.3 The principal, working closely with the DSL, has overall responsibility for ensuring all aspects of child protection and safeguarding are paramount in the organisation. They are further supported by:
 - Trust Board safeguarding lead – Robert Keniwell
 - Local Academy Board safeguarding ambassadors
 - Executive Director: Development – Jenny Thompson
 - Trust Director of SEND and Safeguarding – Nicole Dempsey
 - Trust Assistant Principal for Safeguarding (north west) – Sarah Linton
- 5.4 The functional leads for governance, IT infrastructure, estates and capital, employee relations, and compliance monitoring, as well as ED: Development and Director of SEND and Safeguarding, meet termly to discuss safeguarding priorities and next steps.
- 5.5 The principal should ensure that:
 - there is sufficient capacity, including having enough trained staff and that those staff are given enough time and resource, to meet the safeguarding demands of the academy
 - there is sufficient capacity to continue to respond to concerns raised (either through CPOMS, online monitoring software, or direct contact by a child, family, staff member, external organisations including Children's Social Care, or a member of the public) outside of academy hours



- the requirements set out in the Safeguarding Supervision Policy are met
 - regular meetings take place so that they are kept up to date with all matters, and also to formally check the welfare of all academy safeguarding team members
- 5.5.1 The principal should make all referrals to the LADO for child protection concerns (all cases which concern a staff member); Disclosure and Barring Service (cases where a person is dismissed or left due to risk / harm to a child); and / or the police (cases where a crime may have been committed). If the concern is about the Principal, the referral will be managed by the relevant executive director. If the concern is about a member of the executive, the referral will be managed by the chair of our trust.
- 5.6 Designated Safeguarding Lead (DSL)
- 5.6.1 On induction, all staff are advised of the names of their Designated Safeguarding Leads (DSL) and wider safeguarding team (sometimes referred to as Deputy DSLs). Academies ensure that the DSL and deputy DSLs have a high-profile among staff and students. The responsibilities of the DSL and deputy DSLs, as described in Annex C of Keeping Children Safe in Education, cannot be delegated.
- 5.6.2 Role of the Designated Safeguarding Lead for Child Protection:
- lead on all aspects of safeguarding and child protection including online safety
 - oversee staff referrals through the on-line platform (CPOMS)
 - seek advice and guidance in line with the local safeguarding board's practice
 - make referrals to children's social care if there is a concern that the child is suffering significant harm or is likely to do so, understanding that all referrals are child-centred and the needs of the child are paramount
 - make referrals to Channel if there is a concern regarding terrorism, radicalisation or extremism
 - ensure the voice of the child is heard and that the unique characteristics of the child within their family and community context is communicated
 - make a referral to the National Referral Mechanism if there are any concerns that a child may be a potential victim of slavery or human trafficking
 - be alert to the specific needs of children in need, for example those with special educational needs and young carers
 - refer promptly all cases of suspected child abuse to the local social services department. In the case of a social worker attending an academy to see the student following a referral, if the student's parent arrives to collect the student before the social worker it must be remembered that we have no right to prevent the removal of the student. However, if there are clear signs of physical risk or threat, the police should be called
 - be able to keep detailed, accurate, secure written records of concerns and referrals
 - ensure written records of concerns about a child are kept even if there is no need to make an immediate referral and ensure these records are stored securely and separate to the student's curriculum file until the child's 25th birthday
 - liaise with the Principal to inform him / her of issues, especially ongoing enquiries under section 47 of the Children Act 1989 and police investigations
 - act as a source of support, advice and expertise to staff on matters of safety and safeguarding, and when deciding whether to make a referral by liaising with relevant agencies
 - attend all child protection multi-agency conferences and contribute to child protection plans
 - understand the role of other child protection and safeguarding agencies
- 5.6.3 Co-ordinate training
- Co-ordinate annual statutory training as well as regular training and information updates for all staff to keep child protection and the welfare of children paramount.
 - Ensure all staff read and understand the latest version of Keeping Children Safe in Education, this policy, and related policies and guidance as signposted by the DSL and senior leadership team.
 - DSLs (or deputies) should undergo the relevant Child Protection training, and ensure training is updated regularly – at least every two years in order to act as a source of support and expertise for our learning community.
 - Ensure that new staff (including supply staff, volunteers and contractors) receive safeguarding children induction by their first day of working at the academies in the Trust.
 - Have a working knowledge of how local authorities conduct a child protection case conference and a child protection review conference and be able to attend and contribute to these effectively when required to do so.
 - Obtain access to resources and attend any relevant or refresher training courses.
 - Understand the assessment process for providing early help and intervention, for example through locally agreed common and shared assessment processes such as early help assessments.



- Encourage a culture of listening to children, including taking any concerns or disclosures seriously and ensuring children do not feel that they are causing a problem or inconvenience, feel reassured and not shamed, and taking account of their wishes and feelings in any measures the academy may put in place to protect them.
- Be clear that early help is the most effective way of promoting the welfare of children and understand how to work with other agencies to provide this for children and families in need and be alert to the potential need for early help for children with certain characteristics (see section 8 below)

5.6.4 Raising awareness

- Ensure all staff are aware of academy processes and the role of the DSL.
- Work with the Trust's Executive Principal in reviewing the Child Protection policy annually and the procedures and implementation are updated and reviewed regularly.
- Work with the advocates in reviewing procedures and producing training and updates including an annual written report.
- Ensure the Child Protection policy is available publicly and parents are aware of the fact that referrals about suspected abuse or neglect may be made and the role of the academy in this.
- Ensure that the school operates within the legislative framework and recommended guidance.
- Make links with the Local Safeguarding Board (see flow chart) to make sure staff are aware of training opportunities and the latest local policies on safeguarding.
- Ensure the DSL attend case conferences or nominate an appropriate member of staff to attend on his / her behalf.
- Where children leave the academy, ensure their child protection file is copied for any new school or college as soon as possible but transferred separately from the main student file.
- Develop effective links with relevant statutory and voluntary agencies to support the protection of children.

5.7 The Local Academy Boards (LABs) and Safeguarding Advocate

5.7.1 The LAB has overall responsibility for ensuring that there are sufficient measures in place to safeguard the children in their establishment. Each academy will have a nominated advocate in respect to child protection. In particular, the LAB must ensure that:

- the Child Protection Policy and procedures are in place, followed and reviewed annually
- safer recruitment procedures are in place and followed
- there is a DSL who is a member of the academy's leadership team
- the academy provides relevant safeguarding children training for school staff and volunteers
- each academy follows the process and procedure for dealing with allegations
- they work with the academy to ensure that deficiencies or weaknesses in safeguarding arrangements are remedied without delay
- they evaluate how children are being taught about safeguarding
- they check that the SCR and DBSs are in place for all advocates and staff at least annually
- they dedicate meeting time to consider child protection matters in including referrals (see annual agenda)
- the chair is responsible in the event of an allegation of abuse being made against the principal
- this policy is ratified by the Trust Board and made public on the academy's website

5.7.2 All advocates will receive safeguarding and child protection training at induction and at regular intervals thereafter. This training will provide them with the knowledge and skills required to ensure all of the above.

6.0 Prevention through education

The Dixons Academies Trust recognises that taking action to enable all children to have the best outcomes is a key part of safeguarding and promoting the welfare of children, and that providing a high quality education that is equitable and accessible to all learners is what underpins this. Academies in the Trust will therefore ensure that:

- 6.1 Each student's provision enables them to achieve their best and become confident individuals living rewarding lives, fulfilling our trust mission to challenge educational and social disadvantage in all its forms.
- 6.2 All students are supported to make successful transition between phases and then into adulthood, whether into employment, further / higher education or training, and to enjoy and achieve throughout their time at our academies.
- 6.3 Sufficient time, including planning and opportunities for responsive intervention, will be dedicated to a carefully structured PSHE or equivalent curriculum, including RSE and RHE (see separate policies), careers and specific age-appropriate teaching of child protection themes.
- 6.4 Wherever possible, curriculum links will be made explicit and maximised as opportunities for children to learn about different aspects of safeguarding and child protection in different contexts.



- 6.5 Opportunities to each about safeguarding, including Online Safety, should be personalised and contextualised to take into account children's individual needs as well as making content appropriate for those who have pre-existing vulnerabilities including having been the victim of abuse.

7.0 Respond and report procedures

- 7.1 All staff should be aware of indicators of abuse, neglect and exploitation, understanding that children can be at risk of harm inside and outside of their academy, inside and outside of home, and online. Exercising professional curiosity and knowing what to look for is vital for the early identification of abuse, neglect and exploitation so that staff are able to identify cases of children who may be in need of help or protection.
- 7.2 All staff receive training on what to look out for at least annually, with regular updates throughout the year, as well as training to understand the particular dangers of extra-familial harms, online and technology based harms, and specific contextual factors that have been identified by individual academies.
- 7.3 All staff receive training on how and when to report a concern, including how to distinguish between general concerns and when a child is at immediate risk of harm, and specific details relating to their own academy, including but not limited to: who is the named DSL; who is on the wider safeguarding team; how to access and use CPOMS; contacts and resources specific to their locality.
- 7.4 All staff receive training on how to appropriately respond to a child making a disclosure, including but not limited to:
- making listening to the child their priority
 - not expressing their own views and feelings
 - never offering to keep a secret
 - reassuring them that they have done the right thing by sharing information
 - never claiming that they can fix things
 - explaining what will happen next to the child
- 7.5 All staff are responsible for being observant of the children, exercising professional curiosity at all times, and sharing information according to this policy and their academy's procedures.
- 7.6 Dixons has Trust-wide aligned categories and protocols for recording information on CPOMS, including the facility to identify concerns of malicious intent, disguised compliance, and false reporting. All staff receive training on how to write concise, objective accounts of their concerns and this is monitored by the DSLs and their teams, and moderated by the DSL cross-cutting team.
- 7.7 The DSL and, when deputising for the DSL, members of the wider safeguarding team are responsible for making decisions about how to respond to all concerns raised, including when to refer to Children's Social Care (see Appendix 2 – respond and report flow chart)
- 7.8 The DSL is responsible for being responsive to social workers requests, continuing to review the support and provision available within the academy for children who have social worker involvement, and for keeping an accurate record of social worker contact, meetings and actions taken
- 7.9 The DSL is responsible for working with parents to ensure the safety and wellbeing of children, including when there is a concern, unless communicating with parents is believed to bring an increased risk of harm to the child; in these cases, working with parent can be waived and the decision and reason for doing so recorded
- 7.10 The DSL is responsible for being vigilant to and responding appropriately when an external referral, such as to the police or to Children's Social Care, is unsatisfactory. In the first instance, this is likely to be timely professional challenge directly to the decision maker and, if that is not sufficient, escalation through the relevant complaints procedure.

8.0 Children who are looked after by the Local Authority, including those previously looked after

- 8.1 LABs must ensure that the Principal has appointed a designated teacher to promote the educational achievement of children who are looked after and to ensure that this person has appropriate training (see LAC policy).
- 8.2 The most common reason for children becoming looked after is as a result of abuse and / or neglect or increasingly because they are a refugee. Appropriate academy staff will have the information they need in relation to a child's looked after legal status (whether they are looked after under voluntary arrangements with consent of parents or on an interim or full care order) and contact arrangements with birth parents or those with parental responsibility; the levels of authority delegated to the carer by the authority looking after him / her; details of the child's social worker and the name of the virtual school head in the authority that looks after the child.
- 8.3 The DSL will ensure that responsible staff are aware of the information they require in relation to the student's status, for example, access rights for birth parents or those with parental responsibility. We recognise that in some cases students will not be from the geographical local authority and will ensure that liaison takes place with the relevant professionals from the appropriate authority.

9.0 Children who are at greater risk of harm and children with increased potential need for Early Help

- 9.1 Any child may benefit from early help, but all staff should be particularly alert to the potential need for early help for a child that falls into any of the categories listed below:



- is disabled or has certain health conditions and has specific additional needs
 - has special educational needs (whether or not they have an EHCP)
 - has a mental health need
 - is a young carer
 - is showing signs of being drawn in to anti-social or criminal behaviour, including gang involvement and association with organised crime groups or county lines
 - is frequently missing / goes missing from care or from home
 - has experienced multiple suspensions, is at risk of being permanently excluded from schools, colleges and in alternative provision or a pupil referral unit
 - is at risk of modern slavery, trafficking, sexual or criminal exploitation
 - is at risk of being radicalised or exploited
 - has a parent or carer in custody, or is affected by parental offending
 - is in a family circumstance presenting challenges for the child, such as drug and alcohol misuse, adult mental health issues and domestic abuse
 - is misusing drugs or alcohol themselves
 - has returned home to their family from care
 - is at risk of 'honour'-based abuse such as Female Genital Mutilation or Forced Marriage
 - is a privately fostered child
 - is persistently absent from education, including persistent absences for part of the school day
- 9.2 For children who need a social worker (Child in Need and Child Protection Plans), the DSL should hold and use the information provided by the Local Authority and use this information to make decisions in the best interests of the child. This may be, for example, through an accelerated response to non-attendance or punctuality, or by prioritising them for pastoral and / or academic support.
- 9.3 All staff should understand that children with protected characteristics may be more at risk of harm than their peers and take proportionate action to address the disadvantages they may face. This could be, for example, making reasonable adjustments for a child with a disability or providing extra support for girls if there is evidence they are being disproportionately affected by sexual violence and / or harassment.
- 9.4 All staff should understand that children with special educational needs and disabilities (SEND) may be more vulnerable to exploitation and abuse. They may be more isolated from their peers and may find it difficult to express concern. No concern should be over-looked or passed off as a symptom of SEN or disability – staff must be hyper-vigilant and sensitive to their specific needs and potential communication barriers.
- 9.5 A child being lesbian, gay, bi or trans (LGBT) is not in itself an inherent risk factor, however, children who are LGBT (or perceived to be, whether this is accurate or not) can be targeted by other children. These risks are compounded if a child lacks a trusted adult with whom they can be open. It is therefore vital that all staff endeavour to reduce the social barriers faced by the LGBT community and provide a safe space and opportunities for children who are or may be LGBT to share their concerns.
- 9.6 All staff need to be aware that mental health problems can, in some cases, be an indicator that the child is at risk of suffering abuse, neglect or exploitation and, in other cases, be a pre-vulnerability to abuse. All staff must be aware that diagnosis can only be made by trained professionals, however, we must all be aware of the signs and symptoms that would suggest that a child is developing or is experiencing mental health issues. Historic trauma, for example, adverse childhood experiences, can have a lasting impact and this can impact on the child's mental health and possibly vulnerability to safeguarding risks. Any indication of mental health issues should be referred to the DSL in the usual way. Mental health issues may still carry a stigma for some families in the communities that we serve and therefore all communication must be extremely sensitively handled.
- 9.7 Appropriate safeguarding responses to children who are absent from education settings are in place, particularly on repeat occasions, to help identify any risk of abuse, neglect and exploitation including sexual abuse or exploitation and to help prevent the risks of their going missing in future. All schools have staff dedicated to following up on children's absence and a system of early contact (see CME policy).
- 9.8 Elective Home Education (EHE) can mean some children become less visible to the services that are there to keep them safe and supported in line with their needs. For this reason, our trust will never suggest or recommend EHE and, if suggested or recommended by a parent or other professional, will work proactively and supportively with them to consider all options for what is in the best interests of the child.
- 9.9 Whilst all staff should speak to the DSL with regard to any concerns about female genital mutilation (FGM), there is a specific legal duty on teachers that if, in the course of their work in the profession, they discover that an act of FGM appears to have been carried out on a girl under the age of 18, the teacher must report this to the police. Further information, resources, training and support can be found at: <https://nationalfgmcentre.org.uk/fgm/>
- 9.10 Appropriate safeguarding responses to children who are absent from education settings are in place, particularly on repeat occasions, to help identify any risk of abuse, neglect and exploitation including sexual abuse or exploitation and to help prevent the risks of their going missing in future. All schools have staff dedicated to following up on children's absence and a system of early contact (see CME policy).
- 9.11 Elective Home Education (EHE) can mean some children become less visible to the services that are there to keep them safe and supported



in line with their needs. For this reason, our trust will never suggest or recommend EHE and, if suggested or recommended by a parent or other professional, will work proactively and supportively with them to consider all options for what is in the best interests of the child.

- 9.12 Whilst all staff should speak to the DSL with regard to any concerns about female genital mutilation (FGM), there is a specific legal duty on teachers that if, in the course of their work in the profession, they discover that an act of FGM appears to have been carried out on a girl under the age of 18, the teacher must report this to the police. Further information, resources, training and support can be found at: <https://nationalfgmcentre.org.uk/fgm/>

10.0 Contextual safeguarding

DSLs will be particularly mindful of contextual safeguarding (Firmin 2017). Young people's experiences and relationships beyond the family may mean that they are more or less likely to experience significant harm. This is particularly the case for adolescents who may have access to influences beyond the family, for example, on-line, peer-group, criminal subcultures. This influence occurs at a time when they are particularly vulnerable and suggestable to influence. Peer relationships are increasingly influential and may undermine familial relationships. It is for this reason that schools must be safe spaces where staff are hyper-vigilant to negative peer influences including those that challenge school and social norms. Staff must be wary of potentially exploitative peer to peer relationships, particularly where there is an imbalance of power. Staff must never underestimate the weight of peer influence and must report this as a safeguarding concern where they witness it occurring.

- 10.1 CSE and CCE occur where an individual or group take advantage of an imbalance of power to coerce, manipulate or deceive a child into sexual or criminal activity, often referred to as grooming. The abuse may take various forms, including enticement and or violence. The victim may believe that their involvement is consensual, however, by nature of the power imbalance, this is not the case. In the areas that we serve, CSE and CCE is a prevalent contextual safeguarding issue e.g. sexual exploitation and 'County Lines'. See Annex B of Keeping Children Safe in Education for more information.
- 10.2 All staff must be aware and trained on the indicators that young people are at risk of, or involved in, serious violent crime. As we know, the context in which our academies are based can mean that our children are vulnerable to being exploited by criminal networks or gangs.

11.0 Child on Child abuse

All staff should be aware that children can abuse other children, this can happen both inside and outside of school, as well as online, and that no reports being made does not mean that child on child abuse is not taking place. In light of this, the Dixons Academies Trust is committed to:

- 11.1 Ensuring all staff are able to recognise the indicators and signs of child on child abuse and know how to identify and respond to it.
- 11.2 Ensure all staff are knowledgeable about the different forms of child on child abuse, which includes (but may not be limited to):
- bullying (including cyberbullying, prejudice-based and discriminatory bullying) abuse in intimate personal relationships between peers
 - physical abuse such as hitting, kicking, shaking, biting, hair pulling, or otherwise causing physical harm (this may include an online element which facilitates, threatens and / or encourages physical abuse)
 - sexual violence, such as rape, assault by penetration and sexual assault (this may include an online element which facilitates, threatens and / or encourages physical abuse)
 - sexual harassment, such as sexual comments, remarks, jokes and online sexual harassment, which may be standalone or part of a broader pattern of abuse
 - causing someone to engage in sexual activity without consent, such as forcing someone to strip, touch themselves sexually, or to engage in sexual activity with a third party
 - consensual and non-consensual sharing of nudes and semi-nude images and / or videos (also known as sexting or youth produced sexual imagery)
 - upskirting, which typically involves taking a picture under a person's clothing without their permission, with the intention of viewing their genitals or buttocks to obtain sexual gratification, or cause the victim humiliation, distress or alarm
 - initiation / hazing type violence and rituals (this could include activities involving harassment, abuse or humiliation used as a way of initiating a person into a group and may also include an online element)
- 11.3 Ensuring we create a culture of safety by challenging inappropriate behaviours between peers and not downplaying or dismissing behaviour that is actually abusive in nature by saying things like "it's just banter", "just having a laugh", "part of growing up" or "boys will be boys".
- 11.4 By having a 'zero tolerance' approach to managing child on child abuse in any form.
- 11.5 By following the statutory guidance set out in Part 5 of Keeping Children Safe in Education (2024) regarding response to all reports and concerns of child on child sexual violence and sexual harassment.

12.0 Prevent duty

- 12.1 All schools are subject to a duty under section 26 of the Counter-Terrorism and Security Act (2015), in the exercise of functions, to have "due regard to the need to prevent people from being drawn into terrorism". This duty is known as the Prevent duty. As such, our trust is committed to ensuring:



- 12.2 All DSLs will also be trained in Prevent and related safeguarding issues.
- 12.3 Statutory training on the Prevent duty will be delivered in all academies at least annually.
- 12.4 The DSL is responsible for making referrals to Channel where appropriate.
- 12.5 PSHE or equivalent curriculum, as well as wider curriculum links where they can be made, will explore themes relating to the Prevent duty so that children are informed and equipped with the knowledge to recognise early signs of radicalisation and links to extremism.

13.0 Online Safety (see Online Safety and Acceptable Use of Technology Policy)

The Dixons Academies Trust recognises that it is essential that children are safeguarded from potentially harmful and inappropriate material online material. In response to this, they are committed to:

- 13.1 Ensuring a whole academy approach to online safety that protects and educates both staff and students in their use of technology and establishes mechanisms to identify, intervene in and escalate concerns where possible.
- 13.2 Ensuring awareness of the 'four Cs' of online risk – content, contact, conduct and commerce – amongst both staff and students and having policies and procedures in place to address all areas of risk.
- 13.3 Where children are being asked to learn online at home, to have regard to the DfE advice regarding remote education as well as advice provided by the NSPCC and PSHE Association, as reflected on the Online Safety and Acceptable Use of Technology policy.
- 13.4 For each academy to have appropriate filtering and monitoring technology on all devices used by staff and students in school, and for the effectiveness of this to be regularly reviewed by the Trust and fully understood by the academy leadership teams
- 13.5 For each academy to have appropriate levels of e-security / cybersecurity protection procedures in place for staff and students and for these to be regularly reviewed in order to keep up with changes in the sector.
- 13.6 For each academy to communicate with families about the systems in place to filter and monitor their child(ren)s online use, what children are being asked to do online, and who from the academy (if anyone) they will be interacting with online.
- 13.7 For all aspects of online safety to be regularly reviewed in order to keep up with the latest changes to technology, risk and potential harms in this rapidly evolving sector. The 360 degree safe website is a free online self-review resource that can support with this.

14.0 Record keeping

- 14.1 All concerns, discussion and decision made, and the reasons for those decision, are recorded in writing on CPOMS.
- 14.2 CPOMS provides a confidential and secure storage environment, with separate files for each child, that allows for tailored categorisation, reporting and, where appropriate, secure sharing of information.
- 14.3 All staff receive training on how to record a clear and comprehensive summary of their concern.
- 14.4 The DSL and, when deputising for them, the wider safeguarding team, are responsible for ensuring there is a clear timeline of how each concern was followed up and resolved, including notes of any actions taken, decisions reached, and outcomes.
- 14.5 Timely and appropriate information sharing is vital in identifying and tackling all forms of abuse, neglect and exploitation, and in promoting children's welfare, including in relation to their educational outcomes.
- 14.6 Information is shared with other agencies, including transferring a child's safeguarding file if they move to another setting, proactively and as a matter of routine. Files are transferred within 5 days for an in-year transfer and within the first 5 days of the start of the new term for standard school transitions. Records are kept of files transferred, either in the CPOMS log history or, where a paper or other non-CPOMS file is shared, in the form of a receipt.
- 14.7 When a child leaves and there is no subsequent setting to receive a file transfer, a child's file will be stored securely for 25 years from their date of birth, and then securely disposed of.
- 14.8 All staff are informed at least annually that the Data Protect Act 2018 and UK GDPR do not prevent the sharing of information for the purposes of keeping children safe, and that fears about sharing information must not be allowed to stand in the way of the need to safeguard and promote the welfare and protect the safety of children.
- 14.9 All personal information is stored and transferred fairly and securely, in line with the Data Protection Act 2018 and UK GDPR.

15.0 Allegations, concerns and whistleblowing

- 15.1 All staff are trained in how to respond if they have a concern or allegation about another member of staff, or about the safeguarding practices within the academy or our trust. This includes concerns or allegations that meet the harms threshold set out in Part Four of Keeping Children Safe in Education (2024) as well as low level concerns, both of which are always taken seriously and lessons are learned regardless of the outcome (also see the Dealing with Allegations of Abuse Policy)
- 15.2 All staff and volunteers should be able to raise concerns should they consider there to be poor or unsafe practice and potential failures in the safeguarding regime and know that concerns are taken seriously by the leadership team. Whistleblowing procedures are in place across the academy trust and are available on request or on academy websites. The NSPCC whistleblowing helpline is available for staff who feel unable to raise concerns directly on 0800 028 0285 or help@nspcc.org.uk (also see the Whistleblowing Policy).



Appendix 1 – Academy specific details

Name of academy	Dixons Trinity Academy
Address	Dixons Trinity Academy, Trinity Road, Bradford, West Yorkshire, BD5 0BE
Telephone	01274089860
Fax	info@dixonsta.com
Email office	info@dixonsta.com

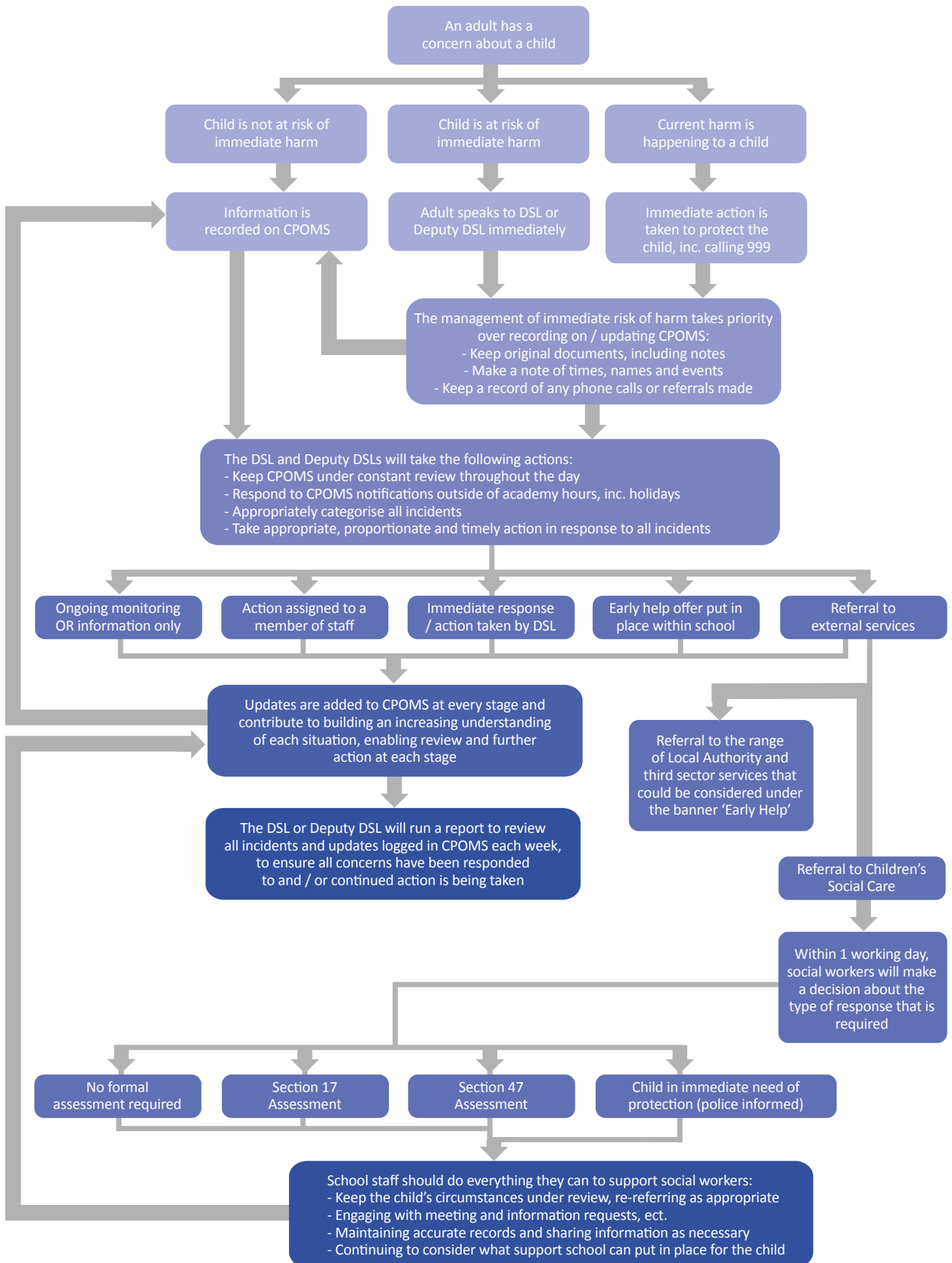
Role	Name	Email
Executive Principal	Jenny Thompson	JThompson@dixonsat.com .
Principal / Head of School	Emma Steele	Esteele@dixonsta.com .
Designated Safeguarding Lead	Katie Welham	kwelham@dixonsta.com .
Deputy Designated Safeguarding Lead	Bradley Russell	BRussell1@dixonsta.com
Deputy Designated Safeguarding Lead	Tamzin Cooper	TCooper@dixonsat.com .
Senior Mental Health Lead	Katie Welham	kwelham@dixonsta.com .
Trust Board – Safeguarding Lead	Robert Keniwell	rkeniwell@dixonsat.com .
Local Area Board – Safeguarding Ambassador	Robert Keniwell .	rkeniwell@dixonsat.com

Local Authority	Bradford - Children and Young Persons Social Care
LA Emergency Contact (concern about a child)	Call 01274 433999 if you want to seek support and/or raise a concern about a child or a young person.
Local Safeguarding Children Board Website	https://fji.bradford.gov.uk/
National advice helplines	Childline: 0800 1111 NSPCC Helpline: 0808 800 5000
National advice websites	https://www.gov.uk/report-child-abuse https://www.nspcc.org.uk/keeping-children-safe/reporting-abuse/report/

NB – if you have an immediate and / or serious concern about the safety of a child, you should call 999



Appendix 2 - Respond and report flowchart



SAFEGUARDING

is everyone's responsibility

If you are worried – talk to someone about it

Dixons Trinity Academy Safeguarding Team



Miss Steele



Miss Welham



Mr Russell



Miss Cooper



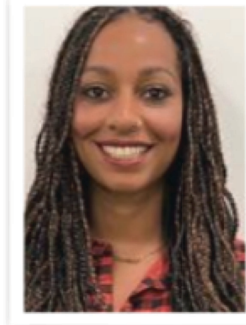
Miss Haycock



Mr Lauder



Mr Hailwood



Miss Stewart



Miss Burrows



HARD WORK

TRUST

FAIRNESS

Challenging educational and social disadvantage



At Dixons Trinity Academy, the safety of our students, staff and visitors is of the highest importance. If you have any questions whilst visiting our academy, please ask the receptionist or your host. We hope you have a safe and productive visit.

Parking

Please ensure you have parked in a marked bay and be aware that whilst parked in our car park, you do so at your own risk. The academy cannot take responsibility for your vehicle or items left in it.

Security

Upon arrival to our academy, you should sign in at reception and will be issued a visitor lanyard with your sign-in pass attached. It is extremely important that you wear this at all times whilst on the academy campus - it helps our staff and students identify who you are! Unfortunately, if you don't have this displayed clearly, you may be challenged or even asked to leave the academy.

Safeguarding

All adults within our academy have a responsibility to ensure the safety of our students. If you have any concerns around the welfare of one of our students, no matter how minor it may seem, you should notify a member of our Designated Safeguarding leads immediately - just ask the receptionist or your host who will direct you to the correct person. Visitors should avoid contact with students unless this is on a professional basis. Also, nobody should have any contact with students outside of the academy - this includes on social media. This is inappropriate. If you are contacted by a student, you should inform the academy immediately. If you have any concerns about a member of staff upon your visit, please contact the Principal – Emma Steele immediately.

Fire evacuation

Details of regular fire alarm testing is at the bottom of this page. In the case of a fire alarm activation, you must evacuate the building using the nearest emergency exit and report to reception staff at the assembly point. The visitor assembly point is the yard gate. Our staff will be able to guide you.

If you discover a fire, activate the alarm by pressing the glass at the nearest call point - these are situated by all stairwells and doors. Do not try and extinguish any fire yourself. Disabled visitors will be escorted to the fire refuge points where a trained member of staff will aid your evacuation. Your host will point these out to you when you arrive at the academy.

Accidents, near misses and first aid

All accidents / incidents / near misses must be reported to the Operations Manager. This is to ensure a full investigation is carried out and future preventative measures taken. Should you require first aid assistance at any point whilst on our campus, notify any member of staff. They will request that a first aid trained member of staff attends to you. Just for peace of mind, be advised that we also hold an emergency defibrillator and asthma medication on site and these are located in our pastoral area.

Regular testing of the fire alarm

We test the fire alarm every Tuesday at 2.15pm

You do not usually need to take action, but if the alarm lasts longer than 10 seconds, please evacuate.